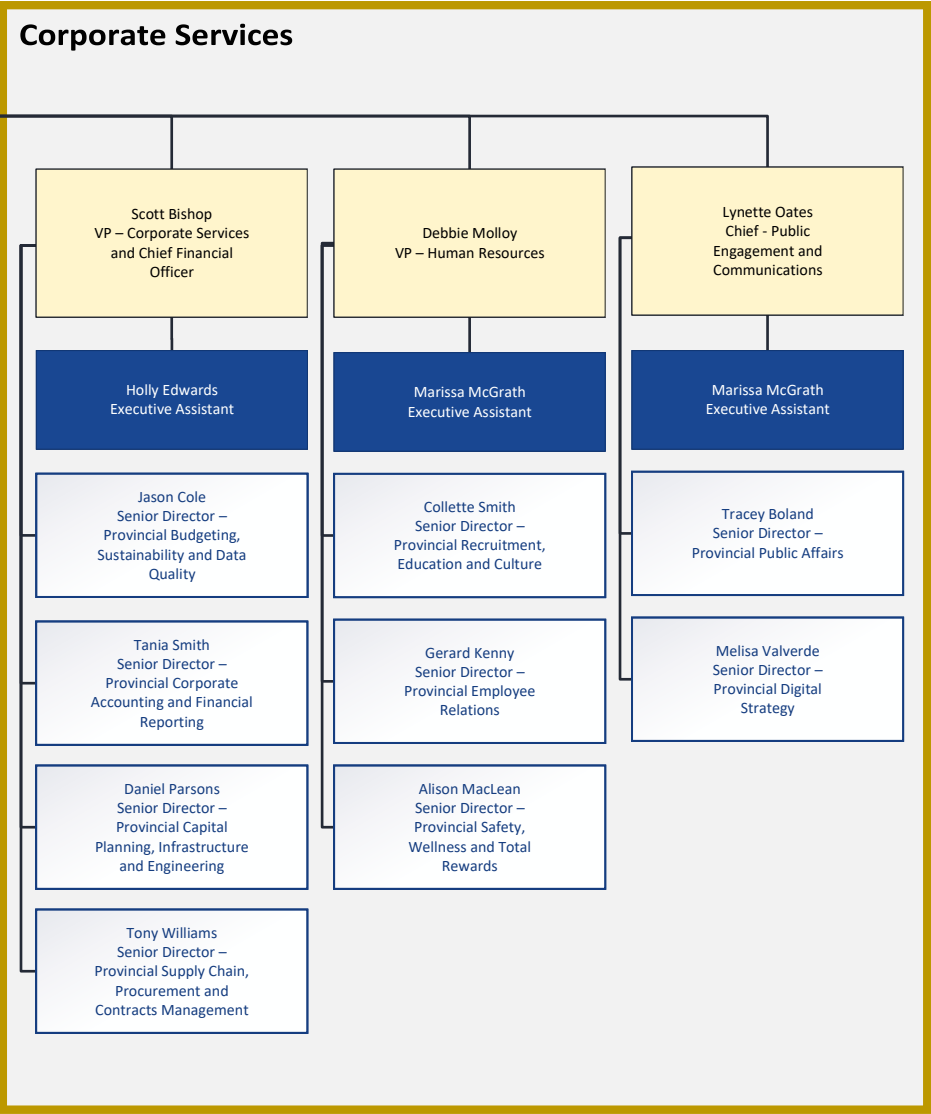
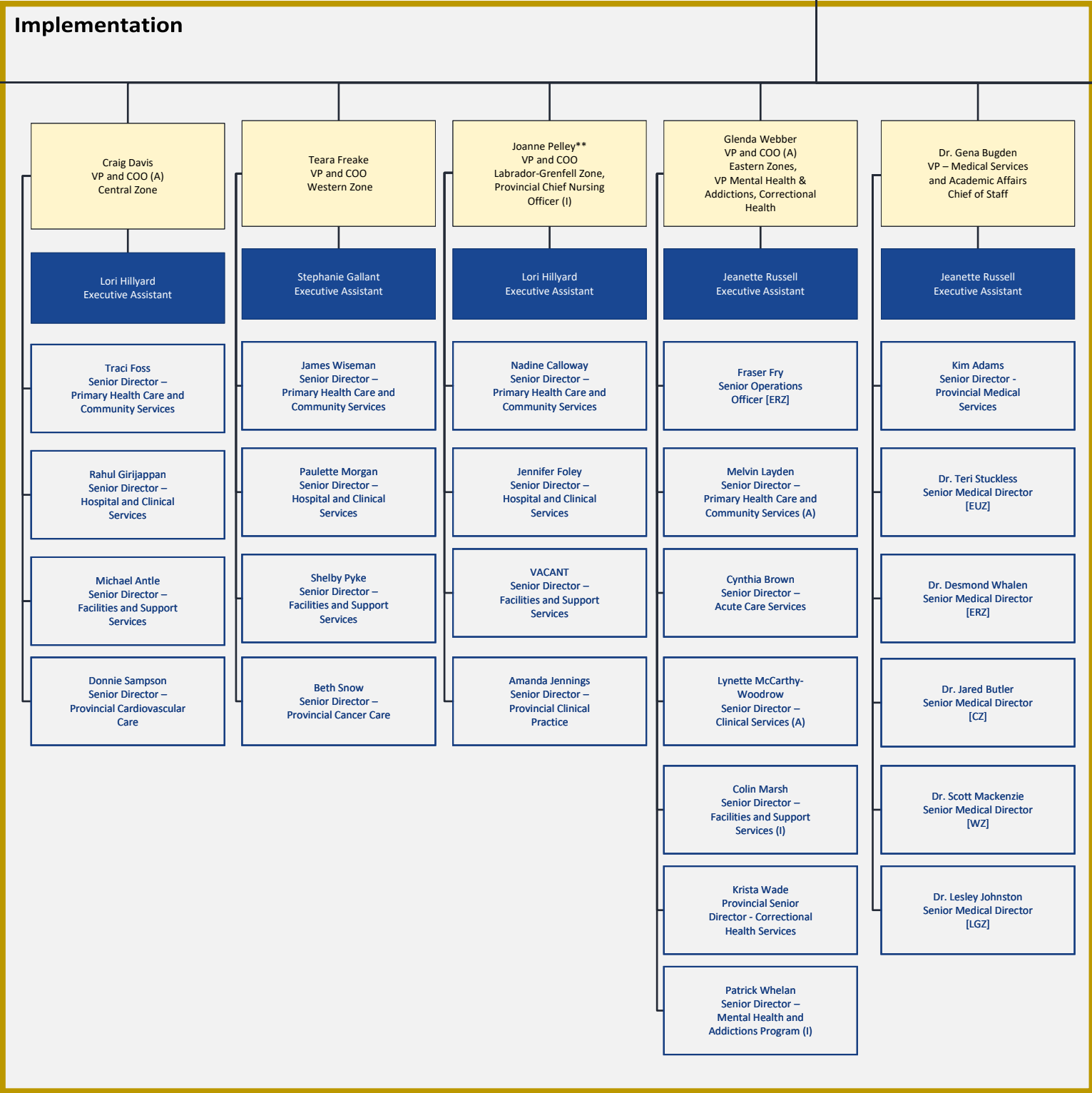
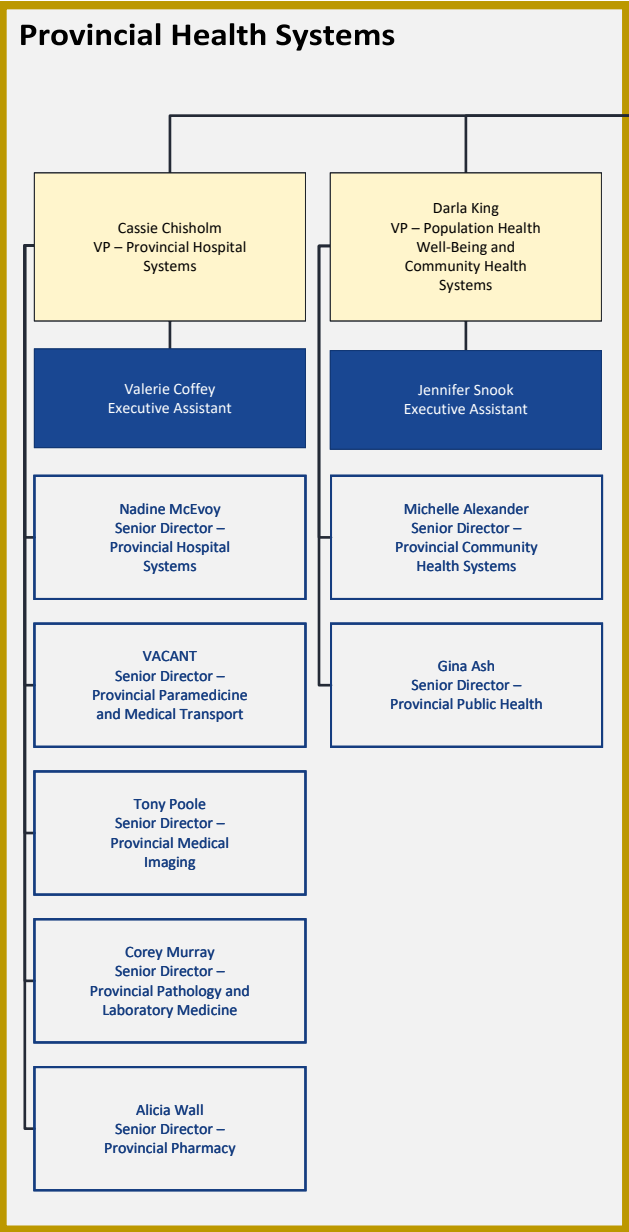
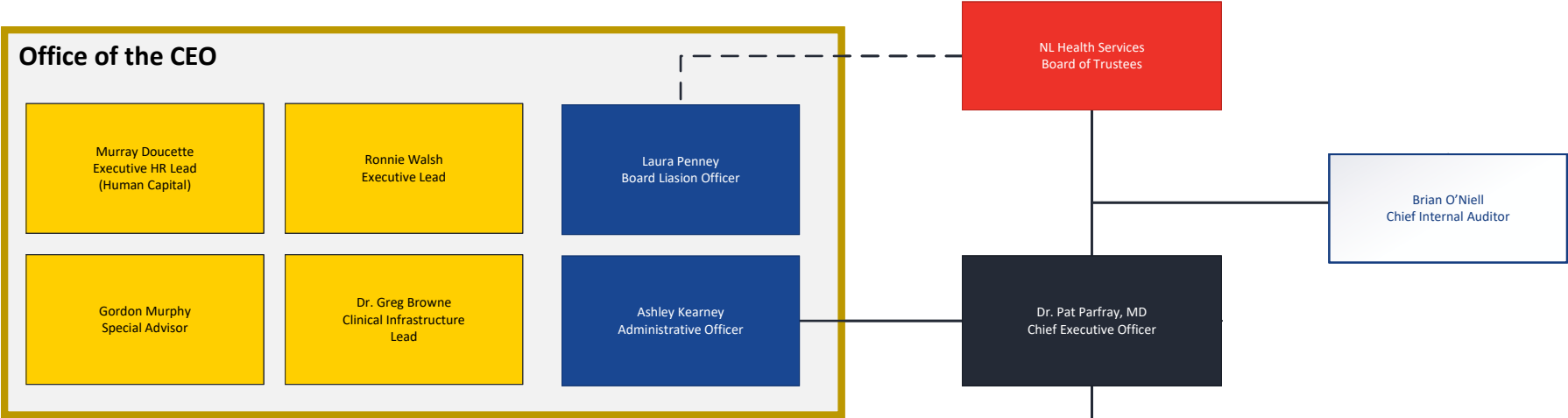


Leadership Organization Chart

Updated on: October 08, 2025



LEGEND

ERZ: Eastern-Rural Zone | EUZ: Eastern-Urban Zone |

CZ: Central Zone | WZ: Western Zone | LGZ: Labrador-Grenfell Zone

(A): Acting |(I): Interim

** Chief Nursing Information Officer/Provincial Chief Nurse